



Trouble free, low cost learning programme for Schools

Introduction

"Knowledge and Understanding of the World" is a main topic in Foundation Stage education. . This activity covers all six areas of learning. Ref: www.standards.dfes.gov.uk Children are fascinated by the process and acutely attentive which aids learning.

The Equipment

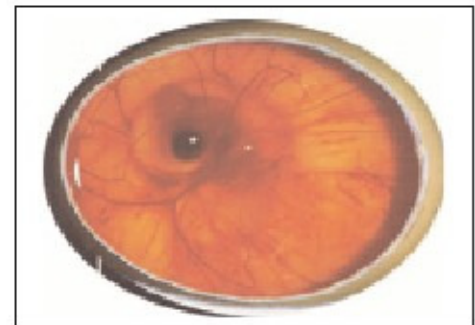
We have designed a low cost service that eliminates problematical areas, namely 240V incubators (safety) the need for a heat lamp post hatching or separate brooding facility and what to do with the chicks and/or unwanted cockerels. We have added the benefit of being able to see the embryo developing in the egg and expert help is only a telephone call away. Very easy to follow instructions.



The "clear view" incubator sits within the brooder to give low heat dissipation and has a safe 12 volt power supply. Egg turning is effected by simply tilting the unit. Weekend tilting is not required.

Incubator - 195 x 135 x 110 / 5 eggs, 12v, 20 watts
Incubator - 340 x 200 x 125 / 10 eggs, 12v, 30 watts

To view embryo development the teacher places an egg on the light screen provided on top of the incubator. The children marvel at the moving, heart beating embryo.



The "clear view" brooder is formed by the removal of the inner shell of the incubator and placing the feeders / waterer as shown. The children watch the development of the chicks and their interaction as they grow.

Brooder - 335 x 210 x 155
Brooder - 395 x 255 x 155

Education

1. It shows children a sequence of events.
2. It helps children show care for others and living things in our environment.

3. The children will be able to measure water needed each day and observe the correct temperature needed for chick development.
4. Look at egg and chick shape, colour, number and behaviour
5. Time to hatch, each chick has a hatch date, month and year.
6. Monitor temperature and progress of hatching.
7. Watching chicks hatch will encourage children to talk about what they have seen and observe the interaction.
8. It also gives children an awareness of change and involves emotions.

<p>Option 1 - 5 Egg Premium Service - 5 Week Programme We provide on loan all the equipment you need comprising a 5 egg "clear view" incubator a brooder combination both 12 volts. Feeders and Drinkers / 5 "Fertile" eggs / Food for the birds / An egg candling capability / Help and assistance on the telephone / A simple leaflet A5 for every member of class explaining the process.</p>	<p>Price</p> <p>£85.00</p>
<p>Option 2 - 10 Egg Premium Service As Option 1 but 10 egg system (Incubator / Brooder combination) with eggs.</p>	<p>£115.00</p>
<p>Option 3 - Pre-Incubation Service (programme reduced by 14 days) As Option 1 or 2 but with eggs already Incubated and due to hatch in a few days. e.g. 3 days. at nominal extra cost</p>	<p>5 eggs £10 10 eggs £20</p>
<p>Option 4 - Purchase 5 Egg "Clear View" Incubator / Brooder combination, with egg candling capability 10 Egg "Clear View" Incubator / Brooder combination, with egg candling capability</p>	<p>£115.00 £145.00</p>

How to Order & Proceed

1. Order in writing, e-mail (enquiry@perfectpoultry.co.uk) or letter with name, address, post code and telephone number.
2. Advise option and if you want pre-incubated eggs (at extra cost) please stipulate how many.
3. Payment by schools - on receipt of invoice by cheque within 14 days.
4. Payment by others - cheque or by Paypal with order.
5. Please stipulate date of delivery - goods must be signed for on receipt.
6. We will advise you of the collection point or if a pupil takes the chicks just post the strong practical equipment back to us.
7. If you would like to visit us we would be pleased to see you by appointment.

Terms & Conditions

1. We will supply anything ordered by first class or special next day delivery mail, depending on the urgency. Consignments containing "pre-incubated" eggs will be sent in thermal containers overnight, for immediate continued incubation.
2. At the end of the Programme you can return the birds and/or equipment to a local collection point (up to 30 minutes drive from the School) or post the equipment or deliver it to Lightwater. Unwanted "parent reared" cockerels can be returned to Lightwater up to six months after they were hatched.
3. We provide a free online advice service via our web site that is currently open to anyone - www.perfectpoultry.co.uk
4. In the event you do not return the equipment at the end of the 6 week programme it is agreed that you will pay us the sum of £10.00 per week or part of a week for each week return is not effected by you.
5. We provide all "fertile" eggs in the belief that they are in fact fertile but this cannot be guaranteed except for the pre-incubated eggs. As a rule of thumb 60% fertility is a good guide with 50% of the birds hatched being cockerels. Thus from 5 eggs you can expect 3 chicks but we do not guarantee this, it is up to nature.
6. Our products and services are not governed by the Distance Selling regulations because they concern livestock and perishable goods.
7. Important - The equipment is designed to operate in an environment of 20 degrees centigrade. (ie. classroom environment).

Perfect Poultry Ltd.

'Fourwalls', Blackstroud Lane East, Lightwater, Surrey GU18 5XR
 07815 072938 - enquiry@perfectpoultry.co.uk - www.perfectpoultry.co.uk
 Company Registration No. 02465905