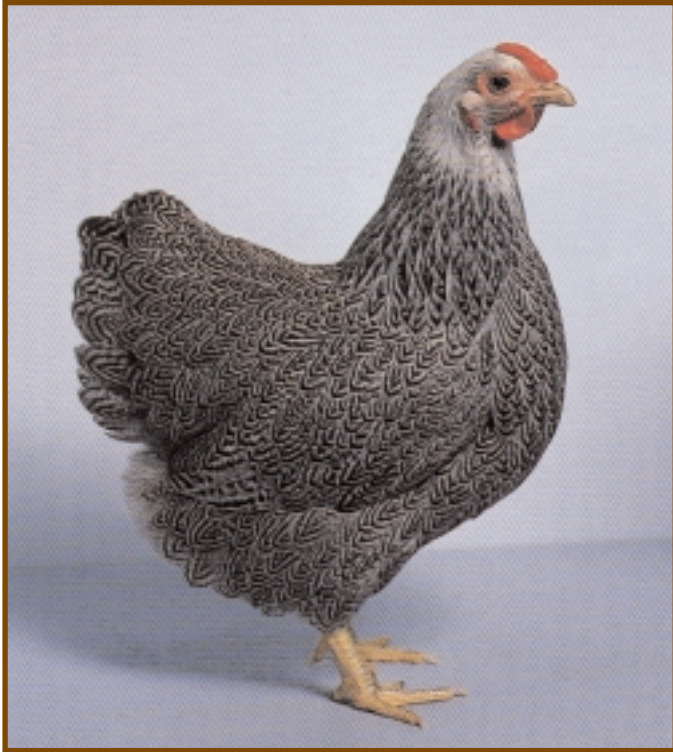


Silver-Pencilled Wyandotte



<i>Origin:</i>	<i>America</i>
<i>Classification:</i>	<i>Heavy, Soft feather</i>
<i>Egg Colour:</i>	<i>Tinted</i>
<i>Temperament:</i>	<i>Alert, active, graceful & docile</i>
<i>Eggs per year:</i>	<i>170 - 180</i>



The first variety of the Wyandotte family was the Silver Laced, originated in America where it was standardised in 1883. The variety was introduced into England at the time, and our breeders immediately perfected the lacings and open ground colouring. Partridge Cochin and Gold Spangled Hamburgh males were crossed with the silver females, to produce the gold laced variety. Blacks, blues and barred have been made in different ways in this country. It is clear that while the family of the Wyandotte is large, every variety is a made one from various blendings of breeds.