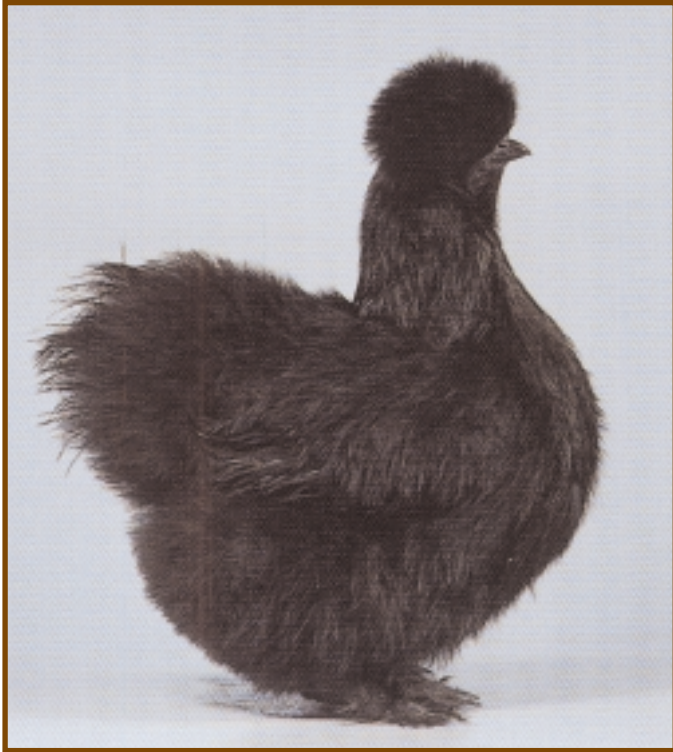


# Black Silkie



<i>Origin:</i>	<i>Asia</i>
<i>Classification:</i>	<i>Light, Soft feather</i>
<i>Egg Colour:</i>	<i>Tinted or Cream</i>
<i>Temperament:</i>	<i>Stylish, Compact and Lively</i>
<i>Eggs per year:</i>	<i>80 - 100</i>



Silkie fowls have been mentioned by authorities for several hundred years, although some think they originated in India, while others favour China and Japan. Despite light weights the Silkie is not regarded as a bantam in this country but as a Large Fowl light breed, and as such it must be exhibited. It's persistent broodiness is a breed characteristic and either pure or crossed, the breed provides reliable broodies for the eggs of Large Fowl or Bantams.